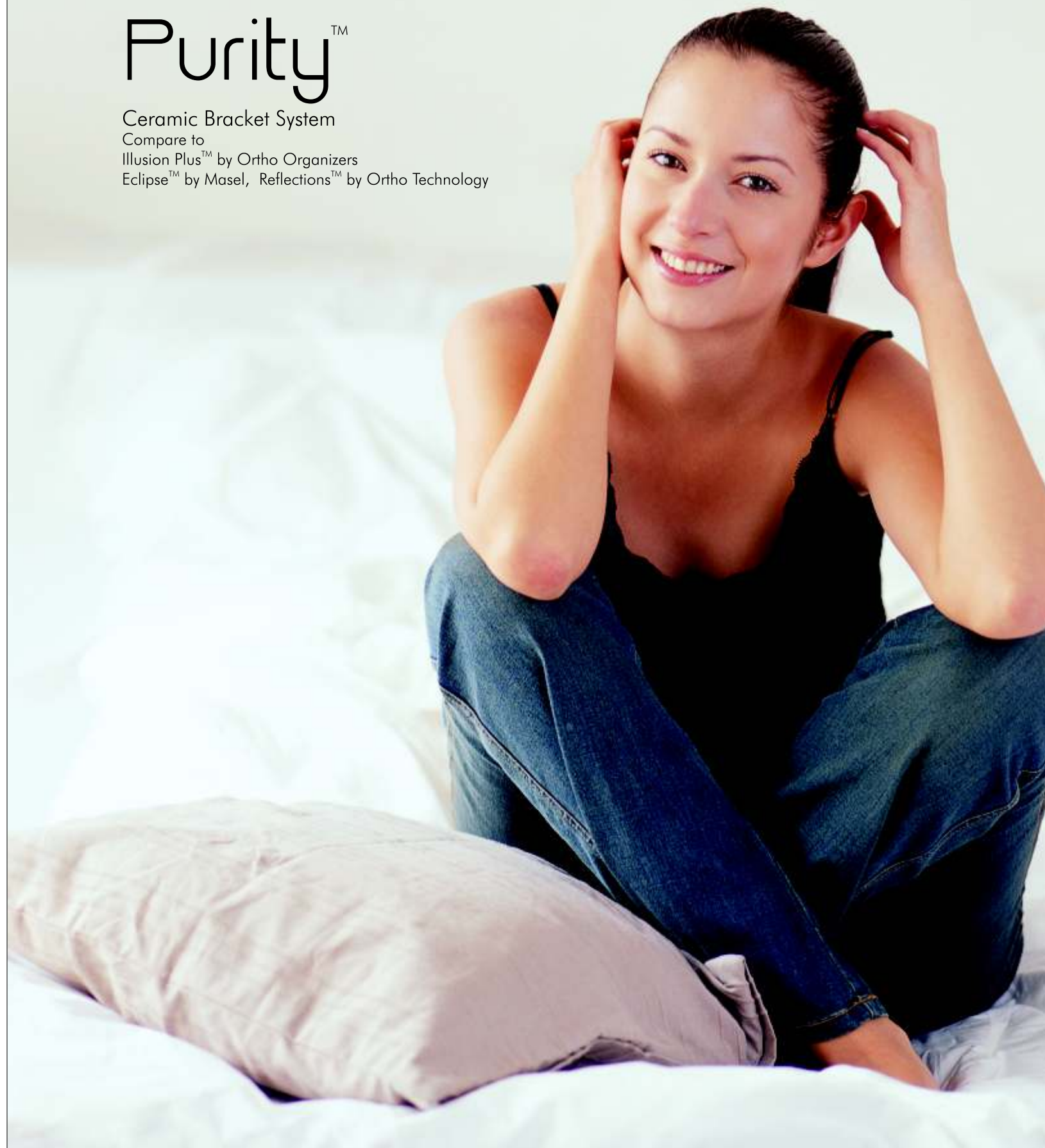




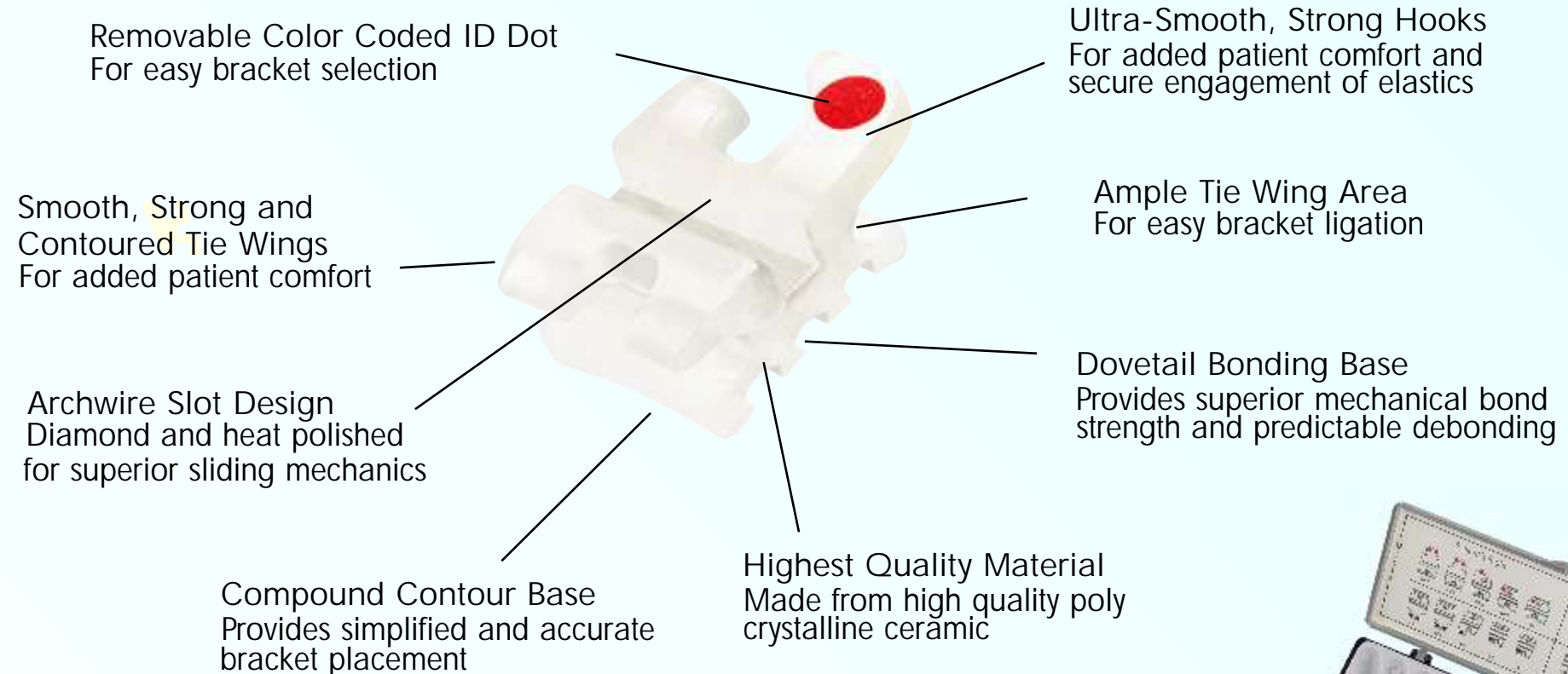
Purity™

Ceramic Bracket System
Compare to
Illusion Plus™ by Ortho Organizers
Eclipse™ by Masel, Reflections™ by Ortho Technology



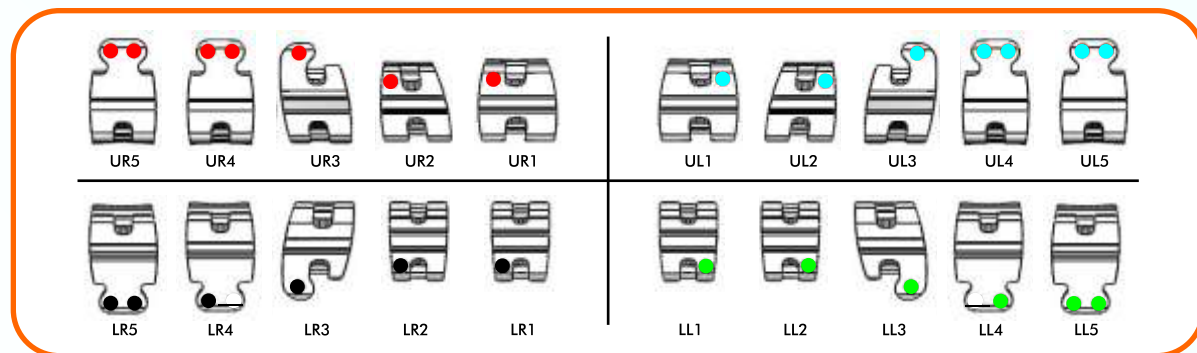
Poly-Crystalline Ceramic bracket system That Combines.....

- 99.99% Pure Alumina
Extremely resistant to slot wear cracking and fracturing
- Dove Tail Grooves for pure mechanical bonding
- Translucent for pleasing aesthetics
Disappears on the tooth



Purity™

Ceramic Bracket System
Compare to
Illusion Plus™ by Ortho Organizers
Eclipse™ by Masel, Reflections™ by Ortho Technology



E-mail : modortho@gmail.com

Website : www.modortho.com

Purity™

Roth Prescription						
▲ Maxillary Arch						
	Torq.	Ang.	Width	R/L	.018" Slot	.022" Slot
1.1 Central	+12°	+5°	.155"	R	BTP-R8-001	BTP-R2-001
				L	BTP-R8-002	BTP-R2-002
2.2 Lateral	+8°	+9°	.133"	R	BTP-R8-003	BTP-R2-003
				L	BTP-R8-004	BTP-R2-004
3.3 Cuspid with hook	0°	+11°	.131"	R	BTP-R8-005	BTP-R2-005
				L	BTP-R8-006	BTP-R2-006
3.3 Cuspid	0°	+11°	.131"	R	BTP-R8-007	BTP-R2-007
				L	BTP-R8-008	BTP-R2-008
4.5 Bicuspids	-7°	0°	.130"	U	BTP-R8-009	BTP-R2-009
5.5 Bicuspids with hook	-7°	0°	.130"	R	BTP-R8-010	BTP-R2-010
				L	BTP-R8-011	BTP-R2-011

Mandibular Arch						
▼ Mandibular Arch						
	Torq.	Ang.	Width	R/L	.018" Slot	.022" Slot
1.1 Central	+17°	+4°	.155"	R	BTP-M8-101	BTP-M2-101
				L	BTP-M8-102	BTP-M2-102
2.2 Lateral	+10°	+8°	.133"	R	BTP-M8-103	BTP-M2-103
				L	BTP-M8-104	BTP-M2-104
3.3 Cuspid with hook	0°	+9°	.131"	R	BTP-M8-105	BTP-M2-105
				L	BTP-M8-106	BTP-M2-106
3.3 Cuspid	0°	+9°	.131"	R	BTP-M8-107	BTP-M2-107
				L	BTP-M8-108	BTP-M2-108
3.3 Cuspid with hook	-7°	+9°	.131"	R	BTP-M8-109	BTP-M2-109
				L	BTP-M8-110	BTP-M2-110
4.5 Bicuspids	-7°	+9°	.131"	R	BTP-M8-111	BTP-M2-111
				L	BTP-M8-112	BTP-M2-112
5.5 Bicuspids with hook	-7°	0°	.130"	R	BTP-M8-113	BTP-M2-113
				L	BTP-M8-114	BTP-M2-114
5.5 Bicuspids	-7°	0°	.130"	U	BTP-M8-115	BTP-M2-115

018" Slot .022 Slot
 Description BTP-88-100 BKP-82-100
 Upper/Lower 5x5 No Hooks BTP-88-102 BKP-82-102
 Upper/Lower 5x5 Hooks on Cuspids BTP-88-104 BKP-82-104
 Upper/Lower 3x3 Hooks, 3 BTP-88-106 BKP-82-106
 Upper/Lower 3x3 No Hooks BTP-88-108 BKP-82-108

Standard Edgewise Prescription						
▲ Maxillary Arch						
	Torq.	Ang.	Width	R/L	.018" Slot	.022" Slot
1.1 Central	0°	0°	.155"	R	BTP-E8-401	BTP-E2-401
				L	BTP-E8-402	BTP-E2-402
2.2 Lateral	0°	0°	.133"	R	BTP-E8-403	BTP-E2-403
				L	BTP-E8-404	BTP-E2-404
3.3 Cuspid	0°	0°	.131"	R	BTP-E8-405	BTP-E2-405
				L	BTP-E8-406	BTP-E2-406
3.3 Cuspid with hook	0°	0°	.131"	R	BTP-E8-407	BTP-E2-407
				L	BTP-E8-408	BTP-E2-408
4.5 Bicuspids	0°	0°	.130"	U	BTP-E8-409	BTP-E2-409
5.5 Bicuspids with hook	0°	0°	.130"	R	BTP-E8-410	BTP-E2-410
				L	BTP-E8-411	BTP-E2-411

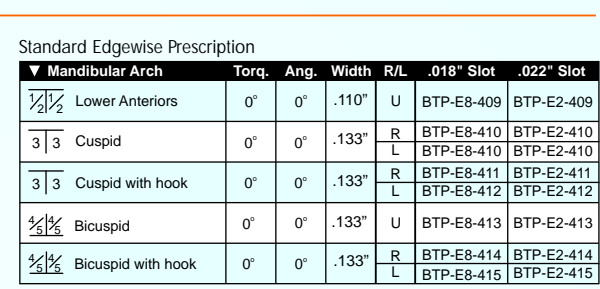
018" Slot .022 Slot
 Description BTP-88-100 BKP-82-100
 Upper/Lower 5x5 No Hooks BTP-88-102 BKP-82-102
 Upper/Lower 5x5 Hooks on Cuspids BTP-88-104 BKP-82-104
 Upper/Lower 3x3 Hooks, 3 BTP-88-106 BKP-82-106
 Upper/Lower 3x3 No Hooks BTP-88-108 BKP-82-108

Roth Prescription						
▼ Mandibular Arch						
	Torq.	Ang.	Width	R/L	.018" Slot	.022" Slot
1.1 Central	+17°	+4°	.155"	R	BTP-M8-101	BTP-M2-101
				L	BTP-M8-102	BTP-M2-102
2.2 Lateral	+10°	+8°	.133"	R	BTP-M8-103	BTP-M2-103
				L	BTP-M8-104	BTP-M2-104
3.3 Cuspid with hook	0°	+9°	.131"	R	BTP-M8-105	BTP-M2-105
				L	BTP-M8-106	BTP-M2-106
3.3 Cuspid	0°	+9°	.131"	R	BTP-M8-107	BTP-M2-107
				L	BTP-M8-108	BTP-M2-108
3.3 Cuspid with hook	-7°	+9°	.131"	R	BTP-M8-109	BTP-M2-109
				L	BTP-M8-110	BTP-M2-110
4.5 Bicuspids	-7°	+9°	.131"	R	BTP-M8-111	BTP-M2-111
				L	BTP-M8-112	BTP-M2-112
5.5 Bicuspids with hook	-7°	0°	.130"	R	BTP-M8-113	BTP-M2-113
				L	BTP-M8-114	BTP-M2-114
5.5 Bicuspids	-7°	0°	.130"	U	BTP-M8-115	BTP-M2-115

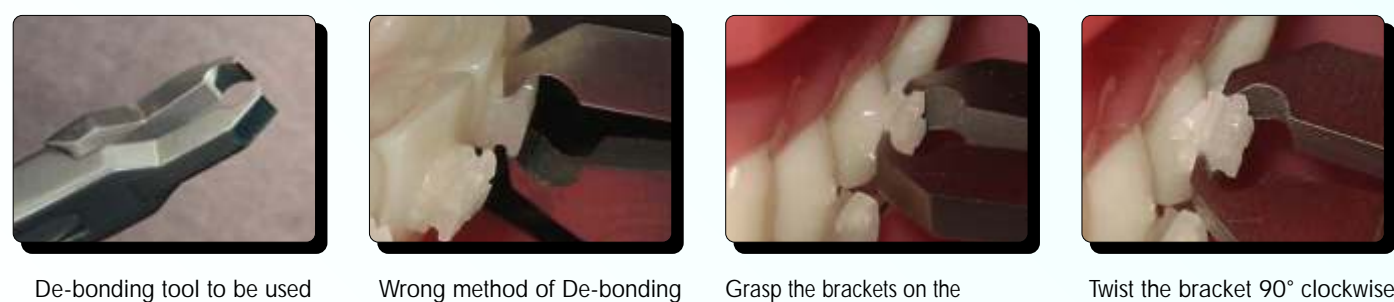
018" Slot .022 Slot
 Description BTP-88-100 BKP-82-100
 Upper/Lower 5x5 No Hooks BTP-88-102 BKP-82-102
 Upper/Lower 5x5 Hooks on Cuspids BTP-88-104 BKP-82-104
 Upper/Lower 3x3 Hooks, 3 BTP-88-106 BKP-82-106
 Upper/Lower 3x3 No Hooks BTP-88-108 BKP-82-108

Standard Edgewise Prescription						
▼ Mandibular Arch						
	Torq.	Ang.	Width	R/L	.018" Slot	.022" Slot
1.1 Central	0°	0°	.155"	R	BTP-E8-401	BTP-E2-401
				L	BTP-E8-402	BTP-E2-402
2.2 Lateral	0°	0°	.133"	R	BTP-E8-403	BTP-E2-403
				L	BTP-E8-404	BTP-E2-404
3.3 Cuspid	0°	0°	.131"	R	BTP-E8-405	BTP-E2-405
				L	BTP-E8-406	BTP-E2-406
3.3 Cuspid with hook	0°	0°	.131"	R	BTP-E8-407	BTP-E2-407
				L	BTP-E8-408	BTP-E2-408
4.5 Bicuspids	0°	0°	.130"	U	BTP-E8-409	BTP-E2-409
5.5 Bicuspids with hook	0°	0°	.130"	R	BTP-E8-410	BTP-E2-410
				L	BTP-E8-411	BTP-E2-411

018" Slot .022 Slot
 Description BTP-88-100 BKP-82-100
 Upper/Lower 5x5 No Hooks BTP-88-102 BKP-82-102
 Upper/Lower 5x5 Hooks on Cuspids BTP-88-104 BKP-82-104
 Upper/Lower 3x3 Hooks, 3 BTP-88-106 BKP-82-106
 Upper/Lower 3x3 No Hooks BTP-88-108 BKP-82-108



Bonds & De-Bonds Just Like A Metal Bracket



De-bonding tool to be used Wrong method of De-bonding Grasp the brackets on the mesio-distal side close to the tooth Twist the bracket 90° clockwise to safely remove the bracket