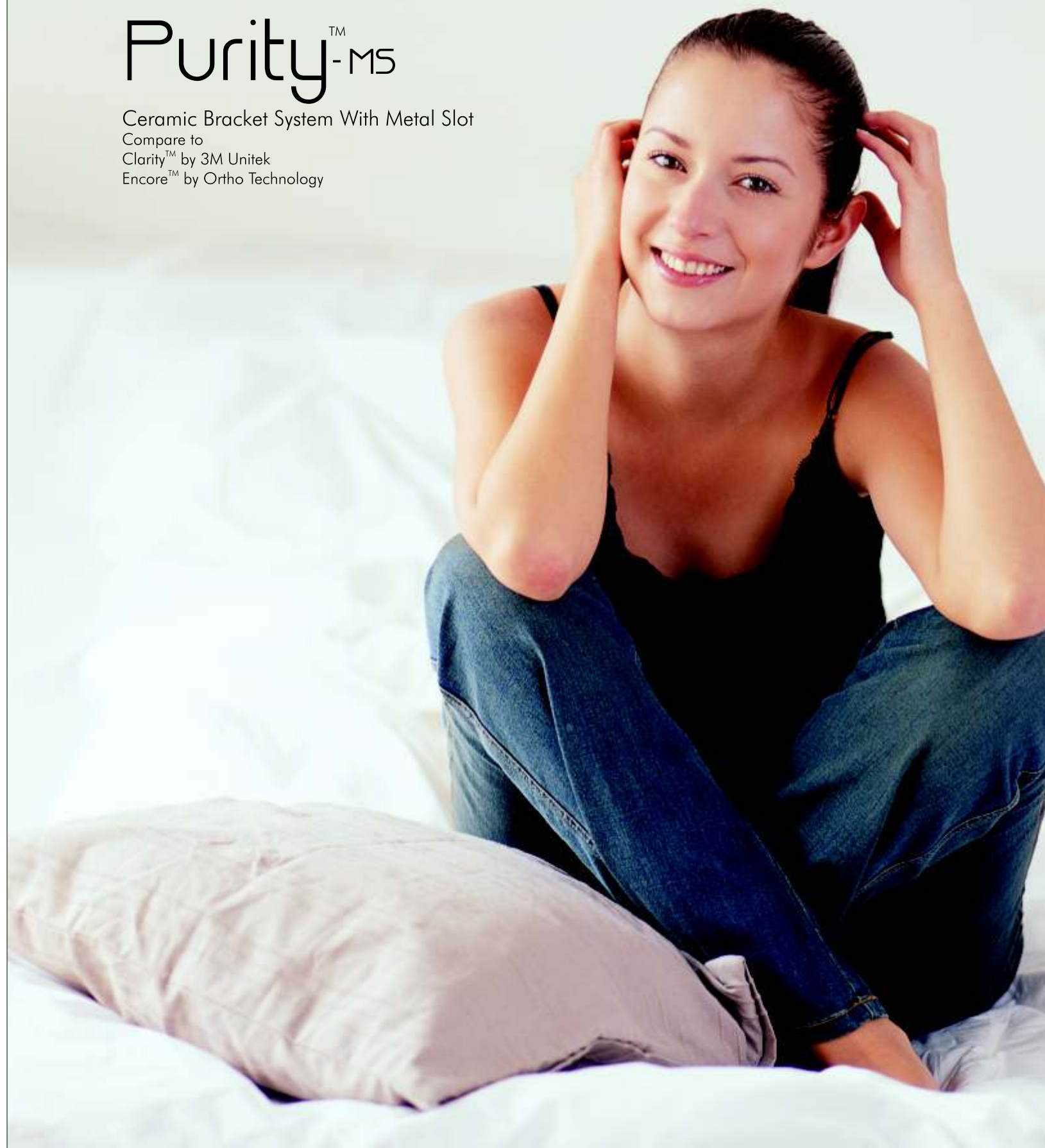




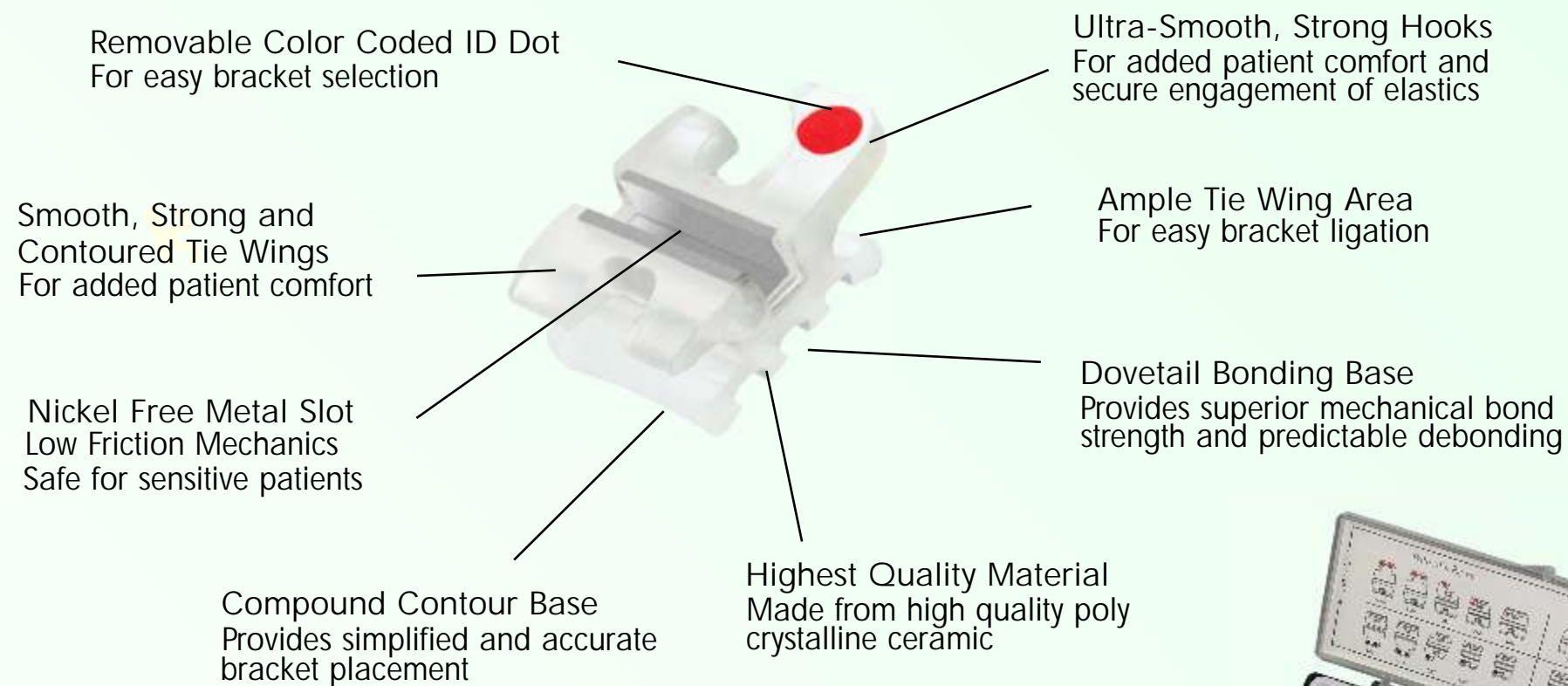
# Purity™-MS

Ceramic Bracket System With Metal Slot  
Compare to  
Clarity™ by 3M Unitek  
Encore™ by Ortho Technology



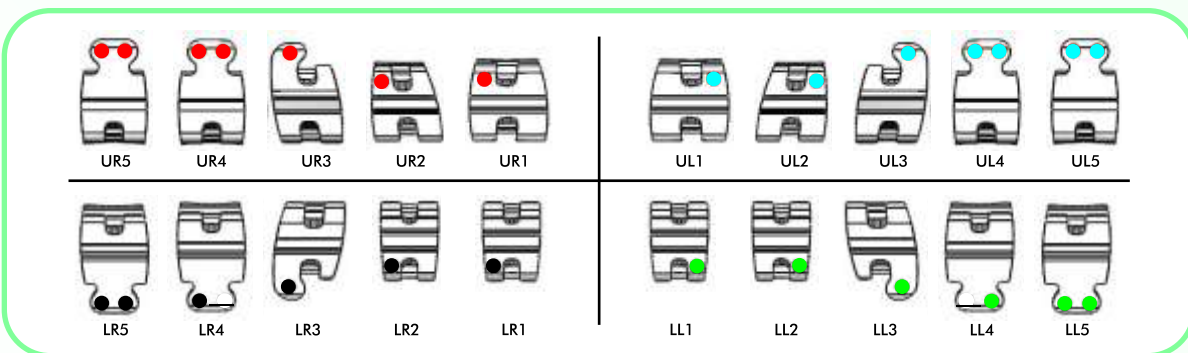
## Poly-Crystalline Ceramic bracket system That Combines.....

- Metal Slot**  
for improving sliding mechanics and to withstand higher torquing forces
- Dove Tail Grooves**  
for pure mechanical bonding
- Translucent**  
for pleasing aesthetics  
Dissappears on the tooth



# Purity™-MS

Ceramic Bracket System With Metal Slot  
Compare to  
Clarity™ by 3M Unitek  
Encore™ by Ortho Technology



E-mail : modortho@gmail.com

Website : www.modortho.com

## Purity™-MS

| Roth Prescription |                    | Torq. | Ang. | Width | R/L | .018" Slot | .022" Slot |
|-------------------|--------------------|-------|------|-------|-----|------------|------------|
| 1                 | Central            | +12°  | +5°  | .155" | R   | BTP-R8-301 | BTP-R2-301 |
|                   |                    |       |      |       | L   | BTP-R8-302 | BTP-R2-302 |
| 2                 | Lateral            | +8°   | +9°  | .133" | R   | BTP-R8-303 | BTP-R2-303 |
|                   |                    |       |      |       | L   | BTP-R8-304 | BTP-R2-304 |
| 3                 | Cuspid with hook   | 0°    | +11° | .131" | R   | BTP-R8-305 | BTP-R2-305 |
|                   |                    |       |      |       | L   | BTP-R8-306 | BTP-R2-306 |
| 3                 | Cuspid             | 0°    | +11° | .131" | R   | BTP-R8-307 | BTP-R2-307 |
|                   |                    |       |      |       | L   | BTP-R8-308 | BTP-R2-308 |
| 4                 | Bicuspid           | -7°   | 0°   | .130" | U   | BTP-R8-309 | BTP-R2-309 |
|                   |                    |       |      |       | L   | BTP-R8-310 | BTP-R2-310 |
| 4                 | Bicuspid with hook | -7°   | 0°   | .130" | R   | BTP-R8-311 | BTP-R2-311 |
|                   |                    |       |      |       | L   | BTP-R8-312 | BTP-R2-312 |

| Patient Kits                    |  | Catalog Numbers |            |
|---------------------------------|--|-----------------|------------|
| Description                     |  | .018" Slot      | .022" Slot |
| Upper/Lower 5x5 No Hooks        |  | BKP-R8-110      | BKP-R2-110 |
| Upper/Lower 5x5 Hooks on Cuspid |  | BKP-R8-112      | BKP-R2-112 |
| Upper/Lower 5x5 Hooks 3, 4 & 5  |  | BKP-R8-114      | BKP-R2-114 |
| Upper/Lower 3x3 Hooks, 3        |  | BKP-R8-116      | BKP-R2-116 |
| Upper/Lower 3x3 No Hooks        |  | BKP-R8-118      | BKP-R2-118 |

| MBT Prescription |                  | Torq. | Ang. | Width | R/L | .018" Slot | .022" Slot |
|------------------|------------------|-------|------|-------|-----|------------|------------|
| 1                | Central          | +17°  | +4°  | .155" | R   | BTP-M8-301 | BTP-M2-301 |
|                  |                  |       |      |       | L   | BTP-M8-302 | BTP-M2-302 |
| 2                | Lateral          | +10°  | +8°  | .133" | R   | BTP-M8-303 | BTP-M2-303 |
|                  |                  |       |      |       | L   | BTP-M8-304 | BTP-M2-304 |
| 3                | Cuspid with hook | 0°    | +9°  | .131" | R   | BTP-M8-305 | BTP-M2-305 |
|                  |                  |       |      |       | L   | BTP-M8-306 | BTP-M2-306 |
| 3                | Cuspid           | 0°    | +9°  | .131" | R   | BTP-M8-307 | BTP-M2-307 |
|                  |                  |       |      |       | L   | BTP-M8-308 | BTP-M2-308 |
| 3                | Cuspid with hook | -7°   | +9°  | .131" | R   | BTP-M8-309 | BTP-M2-309 |
|                  |                  |       |      |       | L   | BTP-M8-310 | BTP-M2-310 |
| 3                | Cuspid           | -7°   | +9°  | .131" | R   | BTP-M8-311 | BTP-M2-311 |
|                  |                  |       |      |       | L   | BTP-M8-312 | BTP-M2-312 |
| 4                | Bicuspid         | -7°   | 0°   | .130" | R   | BTP-M8-313 | BTP-M2-313 |
|                  |                  |       |      |       | L   | BTP-M8-314 | BTP-M2-314 |
| 4                | Bicuspid         | -7°   | 0°   | .130" | R   | BTP-M8-315 | BTP-M2-315 |
|                  |                  |       |      |       | L   | BTP-M8-316 | BTP-M2-316 |

| Patient Kits                    |  | Catalog Numbers |            |
|---------------------------------|--|-----------------|------------|
| Description                     |  | .018" Slot      | .022" Slot |
| Upper/Lower 5x5 No Hooks        |  | BKP-M8-110      | BKP-M2-110 |
| Upper/Lower 5x5 Hooks on Cuspid |  | BKP-M8-112      | BKP-M2-112 |
| Upper/Lower 5x5 Hooks 3, 4 & 5  |  | BKP-M8-114      | BKP-M2-114 |
| Upper/Lower 3x3 Hooks, 3        |  | BKP-M8-116      | BKP-M2-116 |
| Upper/Lower 3x3 No Hooks        |  | BKP-M8-118      | BKP-M2-118 |

| Standard Edgewise Prescription |                    | Torq. | Ang. | Width | R/L | .018" Slot | .022" Slot |
|--------------------------------|--------------------|-------|------|-------|-----|------------|------------|
| 1                              | Central            | 0°    | 0°   | .155" | R   | BTP-E8-301 | BTP-E2-301 |
|                                |                    |       |      |       | L   | BTP-E8-302 | BTP-E2-302 |
| 2                              | Lateral            | 0°    | 0°   | .133" | R   | BTP-E8-303 | BTP-E2-303 |
|                                |                    |       |      |       | L   | BTP-E8-304 | BTP-E2-304 |
| 3                              | Cuspid             | 0°    | 0°   | .131" | R   | BTP-E8-305 | BTP-E2-305 |
|                                |                    |       |      |       | L   | BTP-E8-306 | BTP-E2-306 |
| 3                              | Cuspid with hook   | 0°    | 0°   | .131" | R   | BTP-E8-307 | BTP-E2-307 |
|                                |                    |       |      |       | L   | BTP-E8-308 | BTP-E2-308 |
| 4                              | Bicuspid           | 0°    | 0°   | .130" | R   | BTP-E8-309 | BTP-E2-309 |
|                                |                    |       |      |       | L   | BTP-E8-310 | BTP-E2-310 |
| 4                              | Bicuspid with hook | 0°    | 0°   | .130" | R   | BTP-E8-311 | BTP-E2-311 |
|                                |                    |       |      |       | L   | BTP-E8-312 | BTP-E2-312 |

| Patient Kits                    |  | Catalog Number |            |
|---------------------------------|--|----------------|------------|
| Description                     |  | .018" Slot     | .022" Slot |
| Upper/Lower 5x5 No Hooks        |  | BKP-E8-110     | BKP-E2-110 |
| Upper/Lower 5x5 Hooks on Cuspid |  | BKP-E8-112     | BKP-E2-112 |
| Upper/Lower 5x5 Hooks 3, 4 & 5  |  | BKP-E8-114     | BKP-E2-114 |
| Upper/Lower 3x3 Hooks, 3        |  | BKP-E8-116     | BKP-E2-116 |
| Upper/Lower 3x3 No Hooks        |  | BKP-E8-118     | BKP-E2-118 |

| Roth Prescription |                        | Torq. | Ang. | Width | R/L | .018" Slot | .022" Slot |
|-------------------|------------------------|-------|------|-------|-----|------------|------------|
| 1                 | Lower Anterior         | 0°    | 0°   | .110" | U   | BTP-M8-315 | BTP-M2-315 |
|                   |                        |       |      |       | L   | BTP-M8-316 | BTP-M2-316 |
| 3                 | Cuspid with hook       | -31°  | +5°  | .133" | R   | BTP-R8-317 | BTP-R2-317 |
|                   |                        |       |      |       | L   | BTP-R8-318 | BTP-R2-318 |
| 3                 | Cuspid                 | -31°  | +5°  | .133" | R   | BTP-R8-319 | BTP-R2-319 |
|                   |                        |       |      |       | L   | BTP-R8-320 | BTP-R2-320 |
| 4                 | 1" Bicuspoid           | -37°  | 0°   | .133" | U   | BTP-R8-321 | BTP-R2-321 |
|                   |                        |       |      |       | L   | BTP-R8-322 | BTP-R2-322 |
| 4                 | 1" Bicuspoid with hook | -37°  | 0°   | .133" | R   | BTP-R8-323 | BTP-R2-323 |
|                   |                        |       |      |       | L   | BTP-R8-324 | BTP-R2-324 |
| 5                 | 2" Bicuspoid           | -22°  | 0°   | .133" | U   | BTP-R8-325 | BTP-R2-325 |
|                   |                        |       |      |       | L   | BTP-R8-326 | BTP-R2-326 |
| 5                 | 2" Bicuspoid with hook | -22°  | 0°   | .133" | R   | BTP-R8-327 | BTP-R2-327 |
|                   |                        |       |      |       | L   | BTP-R8-328 | BTP-R2-328 |

\*The Modern Orthodontics version of the Roth is not implied to be an exact version of any other system, nor do we claim any endorsement of Dr. Roth.

| MBT Prescription |                        | Torq. | Ang. | Width | R/L | .018" Slot | .022" Slot |
|------------------|------------------------|-------|------|-------|-----|------------|------------|
| 1                | Lower Anterior         | -6°   | 0°   | .110" | U   | BTP-M8-315 | BTP-M2-315 |
|                  |                        |       |      |       | L   | BTP-M8-316 | BTP-M2-316 |
| 3                | Cuspid with hook       | -6°   | +3°  | .133" | R   | BTP-M8-321 | BTP-M2-321 |
|                  |                        |       |      |       | L   | BTP-M8-322 | BTP-M2-322 |
| 3                | Cuspid                 | -6°   | +3°  | .133" | R   | BTP-M8-323 | BTP-M2-323 |
|                  |                        |       |      |       | L   | BTP-M8-324 | BTP-M2-324 |
| 3                | Cuspid                 | -6°   | +3°  | .133" | R   | BTP-M8-325 | BTP-M2-325 |
|                  |                        |       |      |       | L   | BTP-M8-326 | BTP-M2-326 |
| 4                | 1" Bicuspoid with hook | -32°  | +2°  | .133" | R   | BTP-M8-327 | BTP-M2-327 |
|                  |                        |       |      |       | L   | BTP-M8-328 | BTP-M2-328 |
| 4                | 1" Bicuspoid           | -32°  | +2°  | .133" | R   | BTP-M8-329 | BTP-M2-329 |
|                  |                        |       |      |       | L   | BTP-M8-330 | BTP-M2-330 |
| 5                | 2" Bicuspoid with hook | -37°  | +2°  | .133" | R   | BTP-M8-331 | BTP-M2-331 |
|                  |                        |       |      |       | L   | BTP-M8-332 | BTP-M2-332 |
| 5                | 2" Bicuspoid           | -37°  | +2°  | .133" | R   | BTP-M8-333 | BTP-M2-333 |
|                  |                        |       |      |       | L   | BTP-M8-334 | BTP-M2-334 |

\*The Modern Orthodontics version of the McLaughlin, Bennett, and Trevisi system is not implied to be an exact version of any other system, nor do we claim any endorsement of Doctors McLaughlin, Bennett, and Trevisi.

| Standard Edgewise Prescription |                    | Torq. | Ang. | Width | R/L | .018" Slot | .022" Slot |
|--------------------------------|--------------------|-------|------|-------|-----|------------|------------|
| 1                              | Lower Anterior     | 0°    | 0°   | .110" | U   | BTP-E8-309 | BTP-E2-309 |
|                                |                    |       |      |       | L   | BTP-E8-310 | BTP-E2-310 |
| 3                              | Cuspid             | 0°    | 0°   | .133" | R   | BTP-E8-311 | BTP-E2-311 |
|                                |                    |       |      |       | L   | BTP-E8-312 | BTP-E2-312 |
| 3                              | Cuspid with hook   | 0°    | 0°   | .133" | R   | BTP-E8-313 | BTP-E2-313 |
|                                |                    |       |      |       | L   | BTP-E8-314 | BTP-E2-314 |
| 4                              | Bicuspid           | 0°    | 0°   | .133" | R   | BTP-E8-315 | BTP-E2-315 |
|                                |                    |       |      |       | L   | BTP-E8-316 | BTP-E2-316 |
| 4                              | Bicuspid with hook | 0°    | 0°   | .133" | R   | BTP-E8-317 | BTP-E2-317 |
|                                |                    |       |      |       | L   | BTP-E8-318 | BTP-E2-318 |



### Bonds & De-Bonds Just Like A Metal Bracket



De-bonding tool to be used



Wrong method of De-bonding



Grasp the brackets on the mesio-distal side close to the tooth



Twist the bracket 90° clockwise to safely remove the bracket